

Tilton Crafts

## Counted Cross Stitch Chart



## Alice Notion

## Stitch Count: 375 x 556

[www.TiltonCrafts.com](http://www.TiltonCrafts.com)

## Instructions

This design is recommended to be stitched over 1 on 25 count fabric, but you may use any count fabric that you are comfortable with. Traditionally, most will use 1 strand of floss for 22c / 25ct / 28ct, and 2 strands of floss for 14ct / 16ct / 18ct. Charts are recommended to be stitched from page 1 top left to the last page bottom right. (see diagram below). Also, please take a moment to scan over your symbol list before you begin, as some symbols appear similar.

If the chart contains Kreinik 032 #4 (very fine braid) we recommend that you use one strand of the Kreinik along with one strand of white floss.

You may also use the tent stitch or full cross stitches depending on your preference. We want to thank you for purchasing this design and welcome any questions or comments that you may have at any time.

Website: [www.TiltonCrafts.com](http://www.TiltonCrafts.com)

Email: [Support@TiltonCrafts.com](mailto:Support@TiltonCrafts.com)

Start your stitching on Page 1 and continue over to Page 6. Page 7 will start below your Page 1 stitching. Page 13 will start below your page 7 stitching, and so forth.

Page 1	Page 2	Page 3	Page 4	Page 5	Page 6
Page 7	Page 8	Page 9	Page 10	Page 11	Page 12
Page 13	Page 14	Page 15	Page 16	Page 17	Page 18
Page 19	Page 20	Page 21	Page 22	Page 23	Page 24
Page 25	Page 26	Page 27	Page 28	Page 29	Page 30
Page 31	Page 32	Page 33	Page 34	Page 35	Page 36
Page 37	Page 38	Page 39	Page 40	Page 41	Page 42

## **Cleaning & Care**

When handling any needlework, always take the special care that is necessary to keep your work clean. Wash hands frequently to prevent body oils from staining the fabric or cross stitching.

Be sure to remove your cross stitching from the hoop each time you stop stitching to prevent hoop marks from soiling your fabric.

It is recommended that you use approximately 18" lengths of thread when stitching your project. This will help to avoid knotting, twisting, or fraying of the thread while you work.

Your project should be stored in a bag or workbasket when not being stitched to protect it from dust, spills, etc.

## **Washing Instructions For Cross Stitch**

If you have followed the care instructions, you may not find it necessary to launder your piece before framing or finishing it. If, however, your piece has become soiled, wash it following the instructions below:

Always wash each cross stitch separately.

Wash your cross stitch in lukewarm water with a mild detergent or dishwashing liquid. Do NOT use Woolite, harsh detergents, or chlorine bleach.

Rinse cross stitch several times in clear water. Do not worry if water becomes colored when washing your piece – continue rinsing in clear water.

Roll the cross stitch between two clean towels squeezing gently without wringing – Do Not allow cross stitch piece to touch upon itself. Unroll towels and spread out piece flat to dry on a towel. Never leave damp cross stitch folded or in a heap.

To iron your piece, place the dry cross stitch face down between two clean towels and press with a warm, not hot, iron. To remove creases or fold lines from your piece, you may find it necessary to use the steam setting on your iron.

It is NOT recommended that Scotchgard or other products of this type be used on your projects as they may cause chemical reactions with your thread dyes.

It is generally NOT recommended that your cross stitch be dry cleaned. However, certain fabrics (i.e. wools) may require dry cleaning. We suggest that you speak to your local dry cleaner, advising him that there may be a reaction between the thread dyes and the dry cleaning chemicals (i.e. benzene, trichlorethylene, etc).

**Pattern Name:** Alice Notion  
**Designed By:** Shelley Lee  
**Company:** Tilton Crafts  
**Copyright:** © 2014 Tilton Crafts - Artwork © Shu Mizoguchi  
**Fabric:** White - Evenweave, Linen  
**Stitch Count:** 375 W x 556 H  
**Size:** 25ct, 15" x 22 1/8"

Symbol	Type	Number	Color	Skeins
Ж	DMC	152	Shell Pink-MD LT	1
►	DMC	154	Grape-VY DK	1
¶	DMC	158	Cornflower Blue-MD VY DK	1
Ψ	DMC	160	Gray Blue-MD	1
e	DMC	161	Gray Blue	1
÷	DMC	164	Forest Green-LT	1
⌋	DMC	166	Moss Green-MD LT	1
\$	DMC	169	Pewter-LT	1
=	DMC	208	Lavender-VY DK	1
▷	DMC	225	Shell Pink-UL VY LT	1
G	DMC	300	Mahogany-VY DK	2
Π	DMC	301	Mahogany-MD	1
⚙	DMC	307	Lemon	1
■	DMC	310	Black	1
◄	DMC	311	Navy Blue-MD	1
◆	DMC	315	Antique Mauve-VY DK	1
φ	DMC	317	Pewter Gray	1
	DMC	320	Pistachio Green-MD	1
▲	DMC	321	Christmas Red	1
X	DMC	333	Blue Violet-VY DK	1
n	DMC	340	Blue Violet-MD	1
‡	DMC	370	Mustard-MD	1
⌋	DMC	372	Mustard-LT	1
❖	DMC	400	Mahogany-DK	1
∞	DMC	402	Mahogany-VY LT	1
C	DMC	434	Brown-LT	1
⌈	DMC	436	Tan	1
⌋	DMC	445	Lemon-LT	1
⌘	DMC	470	Avocado Green-LT	1
⊙	DMC	471	Avocado Green-VY LT	1
Ω	DMC	498	Christmas Red-DK	1
+	DMC	501	Blue Green-DK	1
⊥	DMC	520	Fern Green-DK	1
—	DMC	524	Fern Green-VY LT	1
▣	DMC	550	Violet-VY DK	1
⚡	DMC	561	Jade-VY DK	1
T	DMC	562	Jade-MD	1
m	DMC	580	Moss Green-DK	1
⊙	DMC	581	Moss Green	1
↗	DMC	640	Beige Gray-VY DK	1
r	DMC	644	Beige Gray-MD	1
✓	DMC	647	Beaver Gray-MD	1
B	DMC	666	Christmas Red-BRT	1
¢	DMC	677	Old Gold-VY LT	1

Symbol	Type	Number	Color	Skeins
◆	DMC	699	Christmas Green	1
K	DMC	700	Christmas Green-BRT	1
∩	DMC	702	Kelly Green	1
‘	DMC	703	Chartreuse	1
#	DMC	720	Orange Spice-DK	1
◇	DMC	729	Old Gold-MD	1
P	DMC	730	Olive Green-VY DK	1
≡	DMC	731	Olive Green-DK	1
BS	DMC	733	Olive Green-MD	1
..	DMC	738	Tan-VY LT	1
≡	DMC	741	Tangerine-MD	1
J	DMC	742	Tangerine-LT	1
<	DMC	746	Off White	1
f	DMC	747	Sky Blue-VY LT	1
□	DMC	754	Peach-LT	1
☆	DMC	772	Yellow Green-VY LT	1
S	DMC	779	Cocoa-DK	1
↗	DMC	780	Topaz-UL VY DK	1
Y	DMC	781	Topaz-VY DK	1
L	DMC	782	Topaz-DK	1
*	DMC	799	Delft Blue-MD	1
♫	DMC	801	Coffee Brown-DK	1
●	DMC	803	Baby Blue-UL VY DK	1
✕	DMC	814	Garnet-DK	2
Æ	DMC	815	Garnet-MD	1
%	DMC	817	Coral Red-VY DK	1
↑	DMC	819	Baby Pink-LT	1
▀	DMC	823	Navy Blue-DK	1
⌒	DMC	833	Golden Olive-LT	1
▼	DMC	890	Pistachio Green-UL DK	1
W	DMC	895	Hunter Green-VY DK	1
§	DMC	906	Parrot Green-MD	1
≡	DMC	907	Parrot Green-LT	1
R	DMC	909	Emerald Green-VY DK	1
8	DMC	917	Plum-MD	1
Z	DMC	918	Red Copper-DK	1
≡	DMC	919	Red Copper	1
♣	DMC	922	Copper-LT	1
E	DMC	930	Antique Blue-DK	1
✕	DMC	934	Black Avocado Green	1
H	DMC	936	Avocado Green-VY DK	1
★	DMC	938	Coffee Brown-UL DK	3
▣	DMC	939	Navy Blue-VY DK	1
5	DMC	943	Bright Green-MD	1
▵	DMC	954	Nile Green	1
♣	DMC	964	Sea Green-LT	1
ℓ	DMC	966	Baby Green-MD	1
?	DMC	972	Canary-DK	1
♪	DMC	976	Golden Brown-MD	1
O	DMC	986	Forest Green-VY DK	1
a	DMC	987	Forest Green-DK	1

Symbol	Type	Number	Color	Skeins
/	DMC	988	Forest Green-MD	1
N	DMC	991	Aquamarine-DK	1
┐	DMC	993	Aquamarine-LT	1
≡	DMC	996	Electric Blue-MD	1
◇	DMC	3012	Khaki Green-MD	1
⊠	DMC	3031	Mocha Brown-VY DK	1
+	DMC	3042	Antique Violet-LT	1
	DMC	3072	Beaver Gray-VY LT	1
>	DMC	3078	Golden Yellow-VY LT	1
×	DMC	3328	Salmon-DK	1
ε	DMC	3346	Hunter Green	1
:	DMC	3348	Yellow Green-LT	1
4	DMC	3350	Dusty Rose-UL DK	1
b	DMC	3363	Pine Green-MD	1
z	DMC	3364	Pine Green	1
■	DMC	3371	Black Brown	2
@	DMC	3607	Plum-LT	1
⊕	DMC	3608	Plum-VY LT	1
▽	DMC	3609	Plum-UL LT	1
▽	DMC	3688	Mauve-MD	1
6	DMC	3721	Shell Pink-DK	1
d	DMC	3722	Shell Pink-MD	1
人	DMC	3747	Blue Violet-VY LT	1
♥	DMC	3750	Antique Blue-VY DK	1
9	DMC	3765	Peacock Blue-VY DK	1
≈	DMC	3766	Peacock Blue-LT	1
∖	DMC	3776	Mahogany-LT	1
◇	DMC	3787	Brown Gray-DK	1
M	DMC	3799	Pewter Gray-VY DK	1
2	DMC	3801	Christmas Red-LT	1
♣	DMC	3808	Turquoise-UL VY DK	1
F	DMC	3815	Celadon Green-DK	1
≡	DMC	3816	Celadon Green-MD	1
⊕	DMC	3817	Celadon Green-LT	1
⌘	DMC	3818	Emerald Green-UL VY DK	1
≡	DMC	3822	Straw-LT	1
◇	DMC	3827	Golden Brown-Pale	1
⊗	DMC	3830	Terra Cotta-MD	1
●	DMC	3834	Grape-DK	1
3	DMC	3835	Grape-MD	1
△	DMC	3836	Grape-LT	1
└	DMC	3837	Lavender-UL DK	1
V	DMC	3838	Lavender Blue-DK	1
&	DMC	3846	Bright Turquoise-LT	1
D	DMC	3847	Teal Green-DK	1
∴	DMC	3852	Straw-VY DK	1
↑	DMC	3854	Autumn Gold-MD	1
∴	DMC	3855	Autumn Gold-LT	1
A	DMC	3858	Rosewood-MD	1
◎	DMC	3859	Rosewood-LT	1
3	DMC	3860	Cocoa	1

Symbol	Type	Number	Color	Skeins
⇒	DMC	3861	Cocoa-LT	1
↗	DMC	3862	Mocha Beige-DK	1
┘	DMC	3863	Mocha Beige-MD	1
♡	DMC	3865	Winter White	1

	0	10	20	30	40	50	60	70
0	P	H	H	H	H	H	H	H
1	P	H	H	H	H	H	H	H
2	P	H	H	H	H	H	H	H
3	P	H	H	H	H	H	H	H
4	P	H	H	H	H	H	H	H
5	P	H	H	H	H	H	H	H
6	P	H	H	H	H	H	H	H
7	P	H	H	H	H	H	H	H
8	P	H	H	H	H	H	H	H
9	P	H	H	H	H	H	H	H
10	P	H	H	H	H	H	H	H
11	P	H	H	H	H	H	H	H
12	P	H	H	H	H	H	H	H
13	P	H	H	H	H	H	H	H
14	P	H	H	H	H	H	H	H
15	P	H	H	H	H	H	H	H
16	P	H	H	H	H	H	H	H
17	P	H	H	H	H	H	H	H
18	P	H	H	H	H	H	H	H
19	P	H	H	H	H	H	H	H
20	P	H	H	H	H	H	H	H
21	P	H	H	H	H	H	H	H
22	P	H	H	H	H	H	H	H
23	P	H	H	H	H	H	H	H
24	P	H	H	H	H	H	H	H
25	P	H	H	H	H	H	H	H
26	P	H	H	H	H	H	H	H
27	P	H	H	H	H	H	H	H
28	P	H	H	H	H	H	H	H
29	P	H	H	H	H	H	H	H
30	P	H	H	H	H	H	H	H
31	P	H	H	H	H	H	H	H
32	P	H	H	H	H	H	H	H
33	P	H	H	H	H	H	H	H
34	P	H	H	H	H	H	H	H
35	P	H	H	H	H	H	H	H
36	P	H	H	H	H	H	H	H
37	P	H	H	H	H	H	H	H
38	P	H	H	H	H	H	H	H
39	P	H	H	H	H	H	H	H
40	P	H	H	H	H	H	H	H
41	P	H	H	H	H	H	H	H
42	P	H	H	H	H	H	H	H
43	P	H	H	H	H	H	H	H
44	P	H	H	H	H	H	H	H
45	P	H	H	H	H	H	H	H
46	P	H	H	H	H	H	H	H
47	P	H	H	H	H	H	H	H
48	P	H	H	H	H	H	H	H
49	P	H	H	H	H	H	H	H
50	P	H	H	H	H	H	H	H
51	P	H	H	H	H	H	H	H
52	P	H	H	H	H	H	H	H
53	P	H	H	H	H	H	H	H
54	P	H	H	H	H	H	H	H
55	P	H	H	H	H	H	H	H
56	P	H	H	H	H	H	H	H
57	P	H	H	H	H	H	H	H
58	P	H	H	H	H	H	H	H
59	P	H	H	H	H	H	H	H
60	P	H	H	H	H	H	H	H
61	P	H	H	H	H	H	H	H
62	P	H	H	H	H	H	H	H
63	P	H	H	H	H	H	H	H
64	P	H	H	H	H	H	H	H
65	P	H	H	H	H	H	H	H
66	P	H	H	H	H	H	H	H
67	P	H	H	H	H	H	H	H
68	P	H	H	H	H	H	H	H
69	P	H	H	H	H	H	H	H
70	P	H	H	H	H	H	H	H
71	P	H	H	H	H	H	H	H
72	P	H	H	H	H	H	H	H
73	P	H	H	H	H	H	H	H
74	P	H	H	H	H	H	H	H
75	P	H	H	H	H	H	H	H
76	P	H	H	H	H	H	H	H
77	P	H	H	H	H	H	H	H
78	P	H	H	H	H	H	H	H
79	P	H	H	H	H	H	H	H
80	P	H	H	H	H	H	H	H

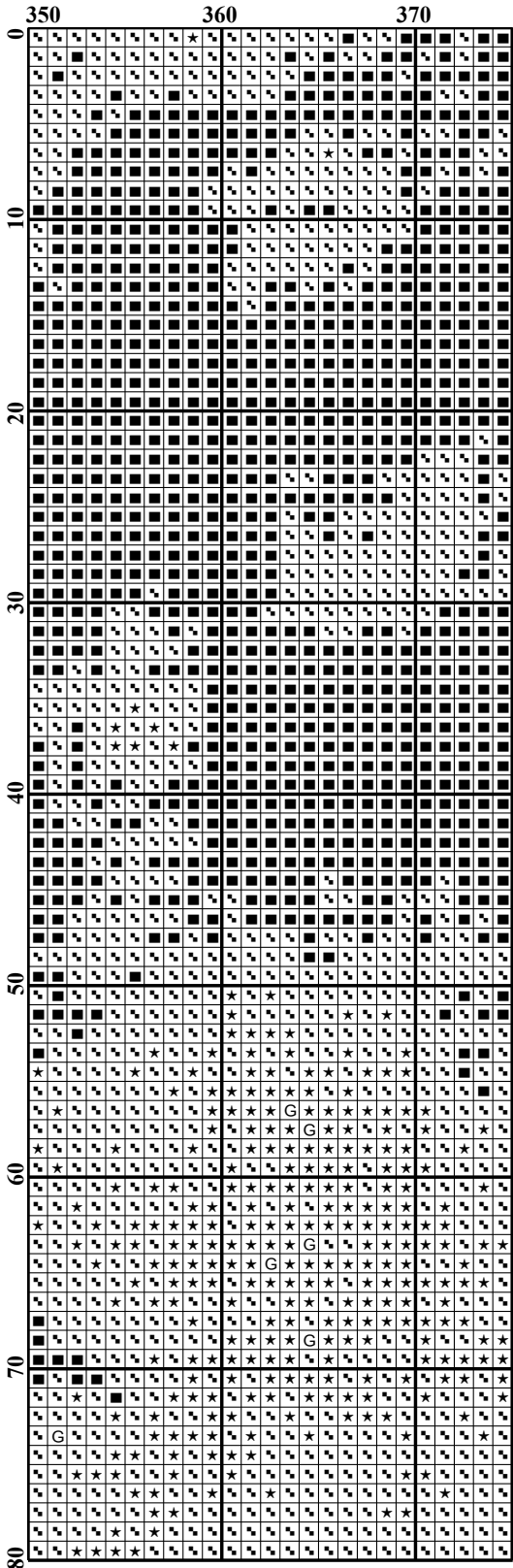


[illegible]

	140	150	160	170	180	190	200	210
0	V	V	V	V	V	V	V	V
10	V	V	V	V	V	V	V	V
20	V	V	V	V	V	V	V	V
30	V	V	V	V	V	V	V	V
40	V	V	V	V	V	V	V	V
50	V	V	V	V	V	V	V	V
60	V	V	V	V	V	V	V	V
70	V	V	V	V	V	V	V	V
80	V	V	V	V	V	V	V	V

	210										220										230										240										250										260										270										280									
0																																																																																
10																																																																																
20																																																																																
30																																																																																
40																																																																																
50																																																																																
60																																																																																
70																																																																																
80																																																																																

[illegible]



[illegible]

	70	80	90	100	110	120	130	140
80	70	80	90	100	110	120	130	140
90	80	90	100	110	120	130	140	
100	90	100	110	120	130	140		
110	100	110	120	130	140			
120	110	120	130	140				
130	120	130	140					
140	130	140						
150								
160								

	140	150	160	170	180	190	200	210
80	☆	☆	☆	☆	☆	☆	☆	☆
90	☆	☆	☆	☆	☆	☆	☆	☆
100	☆	☆	☆	☆	☆	☆	☆	☆
110	☆	☆	☆	☆	☆	☆	☆	☆
120	☆	☆	☆	☆	☆	☆	☆	☆
130	☆	☆	☆	☆	☆	☆	☆	☆
140	☆	☆	☆	☆	☆	☆	☆	☆
150	☆	☆	☆	☆	☆	☆	☆	☆
160	☆	☆	☆	☆	☆	☆	☆	☆



[illegible]

[illegible]

[illegible]

	0	10	20	30	40	50	60	70
160	★	★	★	★	★	★	★	★
170	★	★	★	★	★	★	★	★
180	★	★	★	★	★	★	★	★
190	★	★	★	★	★	★	★	★
200	★	★	★	★	★	★	★	★
210	★	★	★	★	★	★	★	★
220	★	★	★	★	★	★	★	★
230	★	★	★	★	★	★	★	★
240	★	★	★	★	★	★	★	★

	70	80	90	100	110	120	130	140
160	☆	☆	☆	☆	☆	☆	☆	☆
170	☆	☆	☆	☆	☆	☆	☆	☆
180	☆	☆	☆	☆	☆	☆	☆	☆
190	☆	☆	☆	☆	☆	☆	☆	☆
200	☆	☆	☆	☆	☆	☆	☆	☆
210	☆	☆	☆	☆	☆	☆	☆	☆
220	☆	☆	☆	☆	☆	☆	☆	☆
230	☆	☆	☆	☆	☆	☆	☆	☆
240	☆	☆	☆	☆	☆	☆	☆	☆

	140	150	160	170	180	190	200	210
160	160	160	160	160	160	160	160	160
170	170	170	170	170	170	170	170	170
180	180	180	180	180	180	180	180	180
190	190	190	190	190	190	190	190	190
200	200	200	200	200	200	200	200	200
210	210	210	210	210	210	210	210	210
220	220	220	220	220	220	220	220	220
230	230	230	230	230	230	230	230	230
240	240	240	240	240	240	240	240	240



[illegible]



[illegible]

[illegible]

	70	80	90	100	110	120	130	140
240	3	3	3	3	3	3	3	3
250	3	3	3	3	3	3	3	3
260	3	3	3	3	3	3	3	3
270	3	3	3	3	3	3	3	3
280	3	3	3	3	3	3	3	3
290	3	3	3	3	3	3	3	3
300	3	3	3	3	3	3	3	3
310	3	3	3	3	3	3	3	3
320	3	3	3	3	3	3	3	3

[illegible]

[illegible]

	280	290	300	310	320	330	340	350
240	280	290	300	310	320	330	340	350
250	280	290	300	310	320	330	340	350
260	280	290	300	310	320	330	340	350
270	280	290	300	310	320	330	340	350
280	280	290	300	310	320	330	340	350
290	280	290	300	310	320	330	340	350
300	280	290	300	310	320	330	340	350
310	280	290	300	310	320	330	340	350
320	280	290	300	310	320	330	340	350
330	280	290	300	310	320	330	340	350
340	280	290	300	310	320	330	340	350
350	280	290	300	310	320	330	340	350

	350	360	370
240	Ω	Ω	Ω
241	Ω	Ω	Ω
242	Ω	Ω	Ω
243	Ω	Ω	Ω
244	Ω	Ω	Ω
245	Ω	Ω	Ω
246	Ω	Ω	Ω
247	Ω	Ω	Ω
248	Ω	Ω	Ω
249	Ω	Ω	Ω
250	Ω	Ω	Ω
251	Ω	Ω	Ω
252	Ω	Ω	Ω
253	Ω	Ω	Ω
254	Ω	Ω	Ω
255	Ω	Ω	Ω
256	Ω	Ω	Ω
257	Ω	Ω	Ω
258	Ω	Ω	Ω
259	Ω	Ω	Ω
260	Ω	Ω	Ω
261	Ω	Ω	Ω
262	Ω	Ω	Ω
263	Ω	Ω	Ω
264	Ω	Ω	Ω
265	Ω	Ω	Ω
266	Ω	Ω	Ω
267	Ω	Ω	Ω
268	Ω	Ω	Ω
269	Ω	Ω	Ω
270	Ω	Ω	Ω
271	Ω	Ω	Ω
272	Ω	Ω	Ω
273	Ω	Ω	Ω
274	Ω	Ω	Ω
275	Ω	Ω	Ω
276	Ω	Ω	Ω
277	Ω	Ω	Ω
278	Ω	Ω	Ω
279	Ω	Ω	Ω
280	Ω	Ω	Ω
281	Ω	Ω	Ω
282	Ω	Ω	Ω
283	Ω	Ω	Ω
284	Ω	Ω	Ω
285	Ω	Ω	Ω
286	Ω	Ω	Ω
287	Ω	Ω	Ω
288	Ω	Ω	Ω
289	Ω	Ω	Ω
290	Ω	Ω	Ω
291	Ω	Ω	Ω
292	Ω	Ω	Ω
293	Ω	Ω	Ω
294	Ω	Ω	Ω
295	Ω	Ω	Ω
296	Ω	Ω	Ω
297	Ω	Ω	Ω
298	Ω	Ω	Ω
299	Ω	Ω	Ω
300	Ω	Ω	Ω
301	Ω	Ω	Ω
302	Ω	Ω	Ω
303	Ω	Ω	Ω
304	Ω	Ω	Ω
305	Ω	Ω	Ω
306	Ω	Ω	Ω
307	Ω	Ω	Ω
308	Ω	Ω	Ω
309	Ω	Ω	Ω
310	Ω	Ω	Ω
311	Ω	Ω	Ω
312	Ω	Ω	Ω
313	Ω	Ω	Ω
314	Ω	Ω	Ω
315	Ω	Ω	Ω
316	Ω	Ω	Ω
317	Ω	Ω	Ω
318	Ω	Ω	Ω
319	Ω	Ω	Ω
320	Ω	Ω	Ω

	0	10	20	30	40	50	60	70
320	*	*	*	*	*	*	*	*
330	*	*	*	*	*	*	*	*
340	*	*	*	*	*	*	*	*
350	*	*	*	*	*	*	*	*
360	*	*	*	*	*	*	*	*
370	*	*	*	*	*	*	*	*
380	*	*	*	*	*	*	*	*
390	*	*	*	*	*	*	*	*
400	*	*	*	*	*	*	*	*



[illegible]

	140	150	160	170	180	190	200	210
320	h	h	h	h	h	h	h	h
330	h	h	h	h	h	h	h	h
340	h	h	h	h	h	h	h	h
350	h	h	h	h	h	h	h	h
360	h	h	h	h	h	h	h	h
370	h	h	h	h	h	h	h	h
380	h	h	h	h	h	h	h	h
390	h	h	h	h	h	h	h	h
400	h	h	h	h	h	h	h	h

[illegible]

[illegible]

[illegible]

[illegible]

	70	80	90	100	110	120	130	140
400	0	1	2	3	4	5	6	7
401	8	9	0	1	2	3	4	5
402	6	7	8	9	0	1	2	3
403	4	5	6	7	8	9	0	1
404	2	3	4	5	6	7	8	9
405	0	1	2	3	4	5	6	7
406	8	9	0	1	2	3	4	5
407	6	7	8	9	0	1	2	3
408	4	5	6	7	8	9	0	1
409	2	3	4	5	6	7	8	9
410	0	1	2	3	4	5	6	7
411	8	9	0	1	2	3	4	5
412	6	7	8	9	0	1	2	3
413	4	5	6	7	8	9	0	1
414	2	3	4	5	6	7	8	9
415	0	1	2	3	4	5	6	7
416	8	9	0	1	2	3	4	5
417	6	7	8	9	0	1	2	3
418	4	5	6	7	8	9	0	1
419	2	3	4	5	6	7	8	9
420	0	1	2	3	4	5	6	7
421	8	9	0	1	2	3	4	5
422	6	7	8	9	0	1	2	3
423	4	5	6	7	8	9	0	1
424	2	3	4	5	6	7	8	9
425	0	1	2	3	4	5	6	7
426	8	9	0	1	2	3	4	5
427	6	7	8	9	0	1	2	3
428	4	5	6	7	8	9	0	1
429	2	3	4	5	6	7	8	9
430	0	1	2	3	4	5	6	7
431	8	9	0	1	2	3	4	5
432	6	7	8	9	0	1	2	3
433	4	5	6	7	8	9	0	1
434	2	3	4	5	6	7	8	9
435	0	1	2	3	4	5	6	7
436	8	9	0	1	2	3	4	5
437	6	7	8	9	0	1	2	3
438	4	5	6	7	8	9	0	1
439	2	3	4	5	6	7	8	9
440	0	1	2	3	4	5	6	7
441	8	9	0	1	2	3	4	5
442	6	7	8	9	0	1	2	3
443	4	5	6	7	8	9	0	1
444	2	3	4	5	6	7	8	9
445	0	1	2	3	4	5	6	7
446	8	9	0	1	2	3	4	5
447	6	7	8	9	0	1	2	3
448	4	5	6	7	8	9	0	1
449	2	3	4	5	6	7	8	9
450	0	1	2	3	4	5	6	7
451	8	9	0	1	2	3	4	5
452	6	7	8	9	0	1	2	3
453	4	5	6	7	8	9	0	1
454	2	3	4	5	6	7	8	9
455	0	1	2	3	4	5	6	7
456	8	9	0	1	2	3	4	5
457	6	7	8	9	0	1	2	3
458	4	5	6	7	8	9	0	1
459	2	3	4	5	6	7	8	9
460	0	1	2	3	4	5	6	7
461	8	9	0	1	2	3	4	5
462	6	7	8	9	0	1	2	3
463	4	5	6	7	8	9	0	1
464	2	3	4	5	6	7	8	9
465	0	1	2	3	4	5	6	7
466	8	9	0	1	2	3	4	5
467	6	7	8	9	0	1	2	3
468	4	5	6	7	8	9	0	1
469	2	3	4	5	6	7	8	9
470	0	1	2	3	4	5	6	7
471	8	9	0	1	2	3	4	5
472	6	7	8	9	0	1	2	3
473	4	5	6	7	8	9	0	1
474	2	3	4	5	6	7	8	9
475	0	1	2	3	4	5	6	7
476	8	9	0	1	2	3	4	5
477	6	7	8	9	0	1	2	3
478	4	5	6	7	8	9	0	1
479	2	3	4	5	6	7	8	9
480	0	1	2	3	4	5	6	7

[illegible]



[illegible]

[illegible]

[illegible]

[illegible]

	70	80	90	100	110	120	130	140
480	a	H	W	W	W	W	W	W
490	O	O	O	O	O	O	O	O
500	W	W	W	W	W	W	W	W
510	W	W	W	W	W	W	W	W
520	W	W	W	W	W	W	W	W
530	W	W	W	W	W	W	W	W
540	W	W	W	W	W	W	W	W
550	W	W	W	W	W	W	W	W
560	W	W	W	W	W	W	W	W
570	W	W	W	W	W	W	W	W
580	W	W	W	W	W	W	W	W
590	W	W	W	W	W	W	W	W
600	W	W	W	W	W	W	W	W
610	W	W	W	W	W	W	W	W
620	W	W	W	W	W	W	W	W
630	W	W	W	W	W	W	W	W
640	W	W	W	W	W	W	W	W
650	W	W	W	W	W	W	W	W
660	W	W	W	W	W	W	W	W
670	W	W	W	W	W	W	W	W
680	W	W	W	W	W	W	W	W
690	W	W	W	W	W	W	W	W
700	W	W	W	W	W	W	W	W
710	W	W	W	W	W	W	W	W
720	W	W	W	W	W	W	W	W
730	W	W	W	W	W	W	W	W
740	W	W	W	W	W	W	W	W
750	W	W	W	W	W	W	W	W
760	W	W	W	W	W	W	W	W
770	W	W	W	W	W	W	W	W
780	W	W	W	W	W	W	W	W
790	W	W	W	W	W	W	W	W
800	W	W	W	W	W	W	W	W
810	W	W	W	W	W	W	W	W
820	W	W	W	W	W	W	W	W
830	W	W	W	W	W	W	W	W
840	W	W	W	W	W	W	W	W
850	W	W	W	W	W	W	W	W
860	W	W	W	W	W	W	W	W
870	W	W	W	W	W	W	W	W
880	W	W	W	W	W	W	W	W
890	W	W	W	W	W	W	W	W
900	W	W	W	W	W	W	W	W
910	W	W	W	W	W	W	W	W
920	W	W	W	W	W	W	W	W
930	W	W	W	W	W	W	W	W
940	W	W	W	W	W	W	W	W
950	W	W	W	W	W	W	W	W
960	W	W	W	W	W	W	W	W
970	W	W	W	W	W	W	W	W
980	W	W	W	W	W	W	W	W
990	W	W	W	W	W	W	W	W
1000	W	W	W	W	W	W	W	W

	140										150										160										170										180										190										200										210																													
480	1	2	3	4	5	6	7	8	9	10	11	12	13	14	15	16	17	18	19	20	21	22	23	24	25	26	27	28	29	30	31	32	33	34	35	36	37	38	39	40	41	42	43	44	45	46	47	48	49	50	51	52	53	54	55	56	57	58	59	60	61	62	63	64	65	66	67	68	69	70	71	72	73	74	75	76	77	78	79	80	81	82	83	84	85	86	87	88	89	90	91	92	93	94	95	96	97	98	99	100
490	1	2	3	4	5	6	7	8	9	10	11	12	13	14	15	16	17	18	19	20	21	22	23	24	25	26	27	28	29	30	31	32	33	34	35	36	37	38	39	40	41	42	43	44	45	46	47	48	49	50	51	52	53	54	55	56	57	58	59	60	61	62	63	64	65	66	67	68	69	70	71	72	73	74	75	76	77	78	79	80	81	82	83	84	85	86	87	88	89	90	91	92	93	94	95	96	97	98	99	100
500	1	2	3	4	5	6	7	8	9	10	11	12	13	14	15	16	17	18	19	20	21	22	23	24	25	26	27	28	29	30	31	32	33	34	35	36	37	38	39	40	41	42	43	44	45	46	47	48	49	50	51	52	53	54	55	56	57	58	59	60	61	62	63	64	65	66	67	68	69	70	71	72	73	74	75	76	77	78	79	80	81	82	83	84	85	86	87	88	89	90	91	92	93	94	95	96	97	98	99	100
510	1	2	3	4	5	6	7	8	9	10	11	12	13	14	15	16	17	18	19	20	21	22	23	24	25	26	27	28	29	30	31	32	33	34	35	36	37	38	39	40	41	42	43	44	45	46	47	48	49	50	51	52	53	54	55	56	57	58	59	60	61	62	63	64	65	66	67	68	69	70	71	72	73	74	75	76	77	78	79	80	81	82	83	84	85	86	87	88	89	90	91	92	93	94	95	96	97	98	99	100
520	1	2	3	4	5	6	7	8	9	10	11	12	13	14	15	16	17	18	19	20	21	22	23	24	25	26	27	28	29	30	31	32	33	34	35	36	37	38	39	40	41	42	43	44	45	46	47	48	49	50	51	52	53	54	55	56	57	58	59	60	61	62	63	64	65	66	67	68	69	70	71	72	73	74	75	76	77	78	79	80	81	82	83	84	85	86	87	88	89	90	91	92	93	94	95	96	97	98	99	100
530	1	2	3	4	5	6	7	8	9	10	11	12	13	14	15	16	17	18	19	20	21	22	23	24	25	26	27	28	29	30	31	32	33	34	35	36	37	38	39	40	41	42	43	44	45	46	47	48	49	50	51	52	53	54	55	56	57	58	59	60	61	62	63	64	65	66	67	68	69	70	71	72	73	74	75	76	77	78	79	80	81	82	83	84	85	86	87	88	89	90	91	92	93	94	95	96	97	98	99	100
540	1	2	3	4	5	6	7	8	9	10	11	12	13	14	15	16	17	18	19	20	21	22	23	24	25	26	27	28	29	30	31	32	33	34	35	36	37	38	39	40	41	42	43	44	45	46	47	48	49	50	51	52	53	54	55	56	57	58	59	60	61	62	63	64	65	66	67	68	69	70	71	72	73	74	75	76	77	78	79	80	81	82	83	84	85	86	87	88	89	90	91	92	93	94	95	96	97	98	99	100
550	1	2	3	4	5	6	7	8	9	10	11	12	13	14	15	16	17	18	19	20	21	22	23	24	25	26	27	28	29	30	31	32	33	34	35	36	37	38	39	40	41	42	43	44	45	46	47	48	49	50	51	52	53	54	55	56	57	58	59	60	61	62	63	64	65	66	67	68	69	70	71	72	73	74	75	76	77	78	79	80	81	82	83	84	85	86	87	88	89	90	91	92	93	94	95	96	97	98	99	100

	210	220	230	240	250	260	270	280
480	..	..	..	..	..	..	..	..
490	..	..	..	..	..	..	..	..
500	..	..	..	..	..	..	..	..
510	..	..	..	..	..	..	..	..
520	..	..	..	..	..	..	..	..
530	..	..	..	..	..	..	..	..
540	..	..	..	..	..	..	..	..
550	..	..	..	..	..	..	..	..

	280	290	300	310	320	330	340	350
480	X	C	A	C	A	C	A	C
490	C	A	C	A	C	A	C	A
500	A	C	A	C	A	C	A	C
510	C	A	C	A	C	A	C	A
520	A	C	A	C	A	C	A	C
530	C	A	C	A	C	A	C	A
540	A	C	A	C	A	C	A	C
550	C	A	C	A	C	A	C	A



[illegible]